

investor *relation* presentation

FOR MAZAYA REAL ESTATE DEVELOPMENT Q.P.S.C.

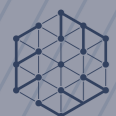


شركة مزايا للتطوير العقاري ش.م.ع.ق.
Mazaya Real Estate Development Q.P.S.C.

About Mazaya

As a leading qatari public shareholding company, mazaya real estate development, which operates according to shariah compliant investments in long-term projects and specializes in real estate investment and development. Since 2008, the company has demonstrated its expertise in creating a well-performing investments, and thereby also playing a strong role in realizing qatar national vision 2030.

Mazaya real estate development company was established on january 2008, and its shares were listed on the qatar stock exchange in october 2010. The initial paid-up capital is qr 1,000,000,000 , with a nominal value of one qr per share.

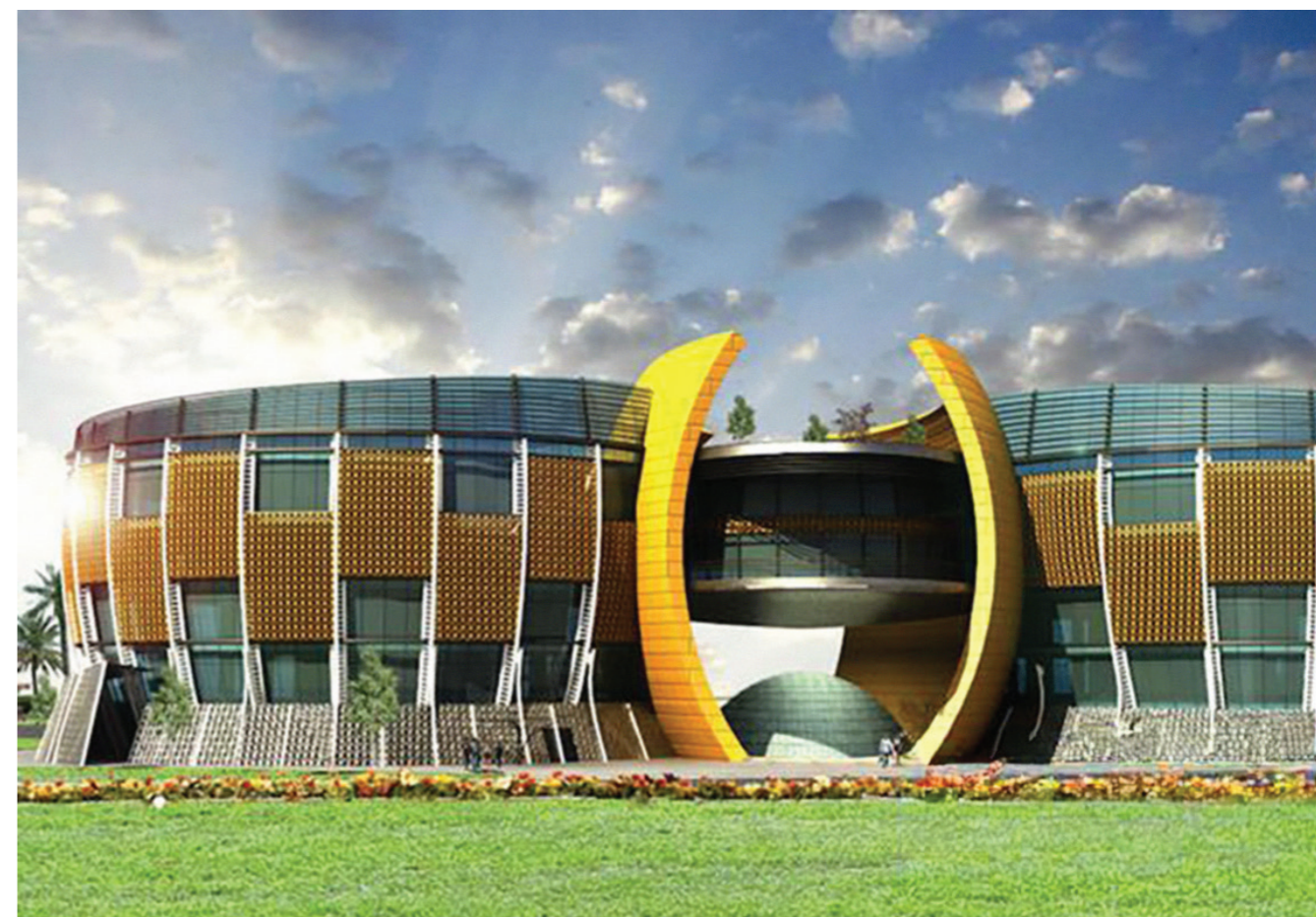


our **projects**



Lusail University

Located in Energy City District of Lusail City, Qatar. Site Area is around 16,387 sqm. The property is leased to the Government Housing & Building Department until 31st August 2025.



Legal Case



Court case

- *The Court of Appeal issued a ruling in Case No. 700027/2024 on 25/6/2024, obligating Mazaya Company to pay an amount of QAR 85,871,005.*
- *The process of appealing the judgment is currently underway.*



financial statement

FOR THE PERIOD ENDING
30TH JUNE 2024



Balance Sheet June 2024 Vs Dec 2023

	30-Jun-24 QR	31-Dec-23 QR
ASSETS		
Non-current assets		
Property and equipment	1,383,649	1,835,376
Right of use assets	1,143,145	-
Investment properties	1,263,839,970	896,885,003
Equity accounted investee	18,822,166	18,743,444
Investments	23,177,197	24,677,197
Finance lease receivable	1,012,877,074	1,031,914,051
Total Non-Current Assets	2,321,243,201	1,974,055,071
Current assets		
Trading properties	28,820,991	22,571,014
Finance lease receivable	37,492,709	36,347,961
Trade and other receivables	23,313,312	47,957,174
Cash and cash equivalents	230,295,113	190,549,738
Assets held for sale	-	134,604,201
Total current assets	319,922,125	432,030,088
TOTAL ASSETS	2,641,165,326	2,406,085,159

Balance Sheet June 2024 Vs Dec 2023

	30-Jun-24 QR	31-Dec-23 QR
EQUITY AND LIABILITIES		
Equity		
Share capital	1,000,000,000	1,000,000,000
Legal reserve	25,475,761	25,475,761
Retained earnings	74,461,706)	25,976,332
Total equity	951,014,055	1,051,452,093
Non-current liabilities		
Lease liabilities	884,674	-
Borrowings	1,381,291,646	1,157,370,108
Provision for employees' end of service benefits	2,006,810	2,793,420
Total Non-Current Liabilities	1,384,183,130	1,160,163,528
Current liabilities		
Lease liabilities	264,121	-
Borrowings	79,876,149	72,833,662
Income tax payable	239,499	435,238
Trade and other payables	225,588,372	121,200,638
Total Current Liabilities	305,968,141	194,469,538
Total liabilities	1,690,151,271	1,354,633,066
TOTAL EQUITY AND LIABILITIES	2,641,165,326	2,406,085,159

Income Statement June 24 Vs. June 23

	30-Jun-24 QR	30-Jun-23 QR
Finance income	32,457,770	33,533,681
Rental income (1)	35,829,072	29,375,733
Operating expenses	(8,583,500)	(7,326,007)
Income from operations	59,703,342	55,583,407
Fair value gain on investment properties	-	17,110,013
Share of (gain) / loss from equity accounted investee-Nishan	78,722	640,760
Provision for impairment on investments	(1,500,000)	(1,500,000)
Other income (2)	6,188,498	10,106,709
Provision for legal expenses (3)	(85,871,006)	(20,638,176)
General and administrative expenses	(15,717,811)	(15,555,685)
Operating profit	(37,118,255)	45,747,028
Finance costs	(38,076,191)	(30,712,001)
Profit for the period before income tax	(75,194,446)	15,035,027
Income tax	(243,592)	(149,663)
Net profit for the period	(75,438,038)	14,885,364
Other comprehensive income	-	-
Total comprehensive income for the period	(75,438,038)	14,885,364
Basic and diluted earnings per share	(0.075)	0.013

Q&A



*thank
you*

